



Public Health
England

A new infection has been detected in Wuhan, China

(Novel Coronavirus)

If you have been to Wuhan, China, in the last 14 days and develop **ANY** of these symptoms, contact a healthcare professional

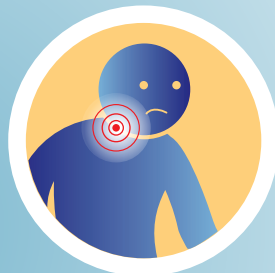
Any of



Cough



Runny nose



Sore throat



Fever



Difficulty breathing

If you develop symptoms within 14 days of leaving China, contact a healthcare professional for free advice and treatment, by calling NHS 111 or your GP, and tell them that you have travelled to Wuhan.